



---

Leading the signal  
all over the world



[www.lemco.gr](http://www.lemco.gr)

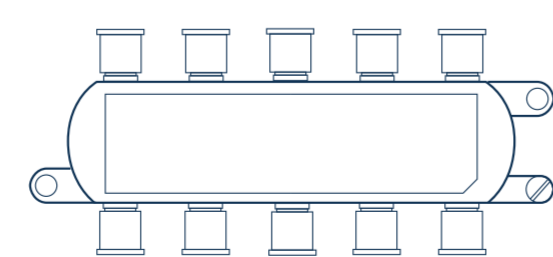
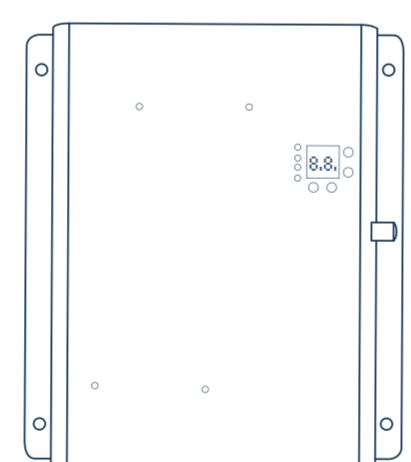
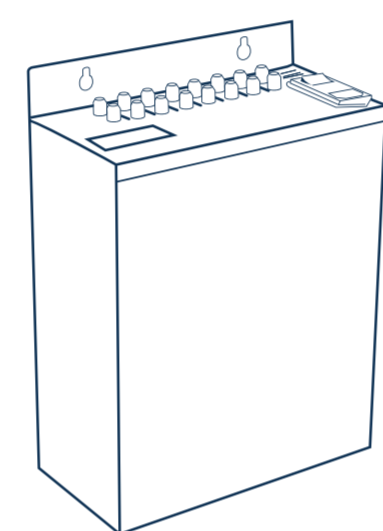
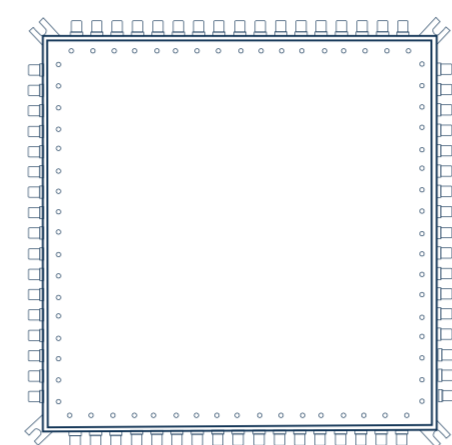
LEMCO

# Who we are

Lemco has over 40 years of experience in designing and manufacturing TV signal broadcast equipment. Renowned for its high standards of quality and wide range of innovative products, it has become established as one of the leading companies in the Greek and European markets. It offers integrated solutions via its wide range product portfolio and technical support services.

[www.lemco.gr](http://www.lemco.gr)



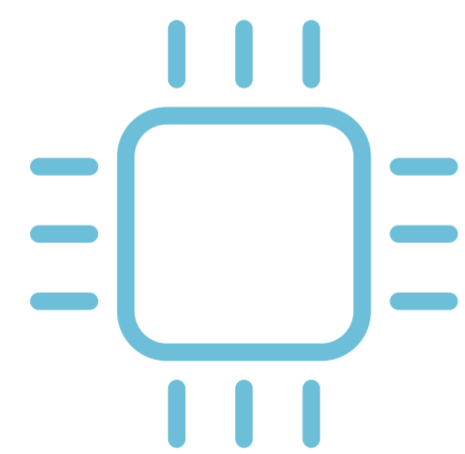


# What we do

Lemco specializes in the development, production and distribution of professional equipment that process and delivers the TV signal over RF, IP and Fiber optics interfaces as described below:

- DTV RF modulators
- Professional TV headends
- CATV amplifiers, attenuators etc.
- SAT multiswitches
- Fiber Optics distribution solutions (GPON, ONU etc.)
- IPTV middleware
- HDMI products series
- Accessories (i.e. RF splitters, coax cables etc.)

# Our values



**Quality**



**Innovation**



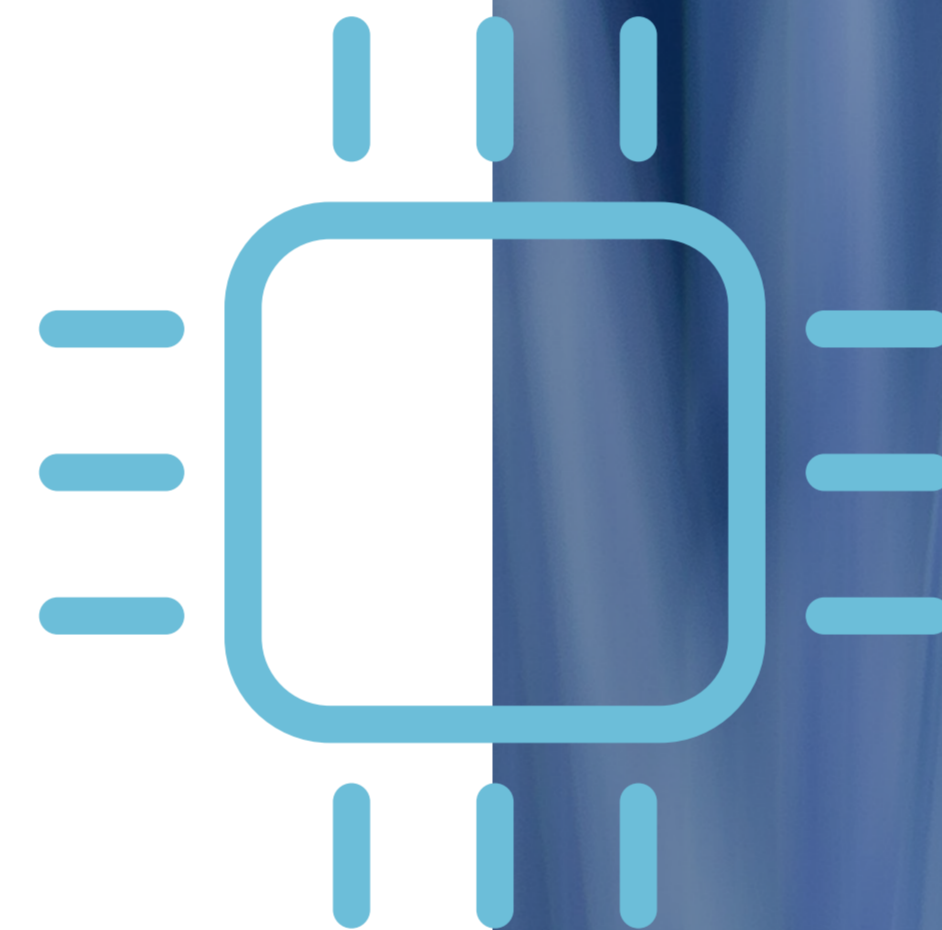
**Human  
Resources**

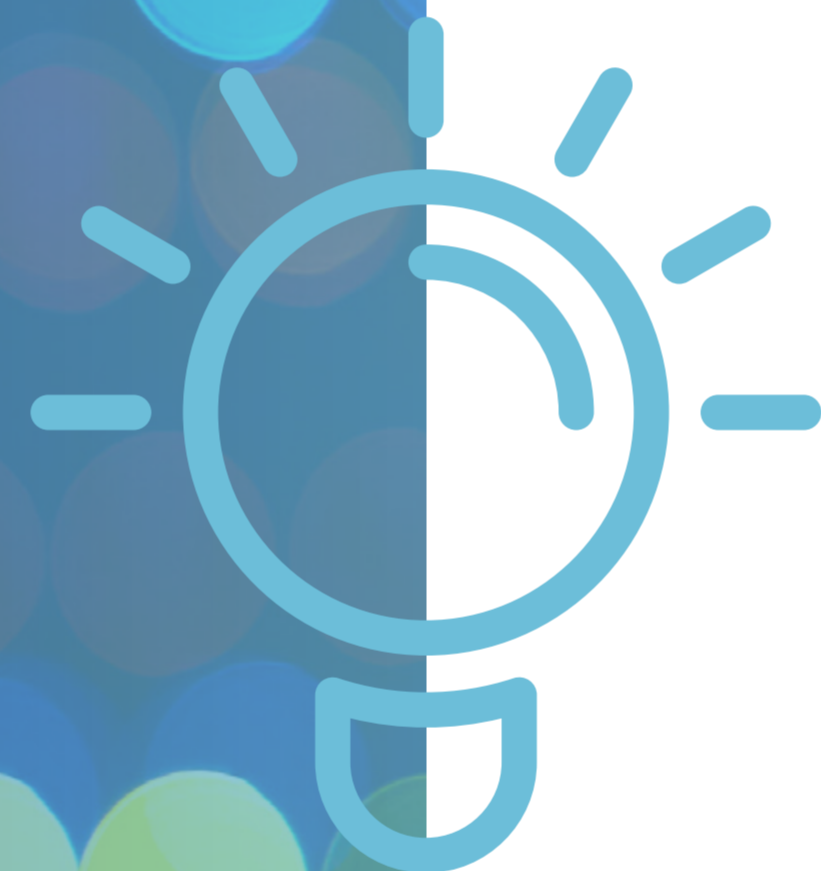


**Consistency  
& Reliability**

# Quality

We are dedicated to meeting the needs of our customers and to keeping our promises. Our primary objective is the provision of products of high quality and standards. This is ensured through quality checks at every stage of the production process.





# Innovation

We anticipate change and seek to be at the forefront of leading electronics technologies. Ongoing research in conjunction with cutting-edge knowledge and creativity guide us constantly towards new and innovative solutions, aimed at offering more sophisticated and efficient products to our customers.

# Human Resources

Our philosophy is human-centred, whether it concerns our staff members, customers, partners or suppliers. We promote and support teamwork, embracing each person's diversity. The continuous development of our employees and the provision of equal educational and training opportunities are central to us. Our work environment is characterized by open communication, trust and fair treatment.





# Consistency & Reliability

We consider our word a commitment and our promises a priority. Therefore we operate with honesty and integrity, with our principles and values as a compass.



LEMCO

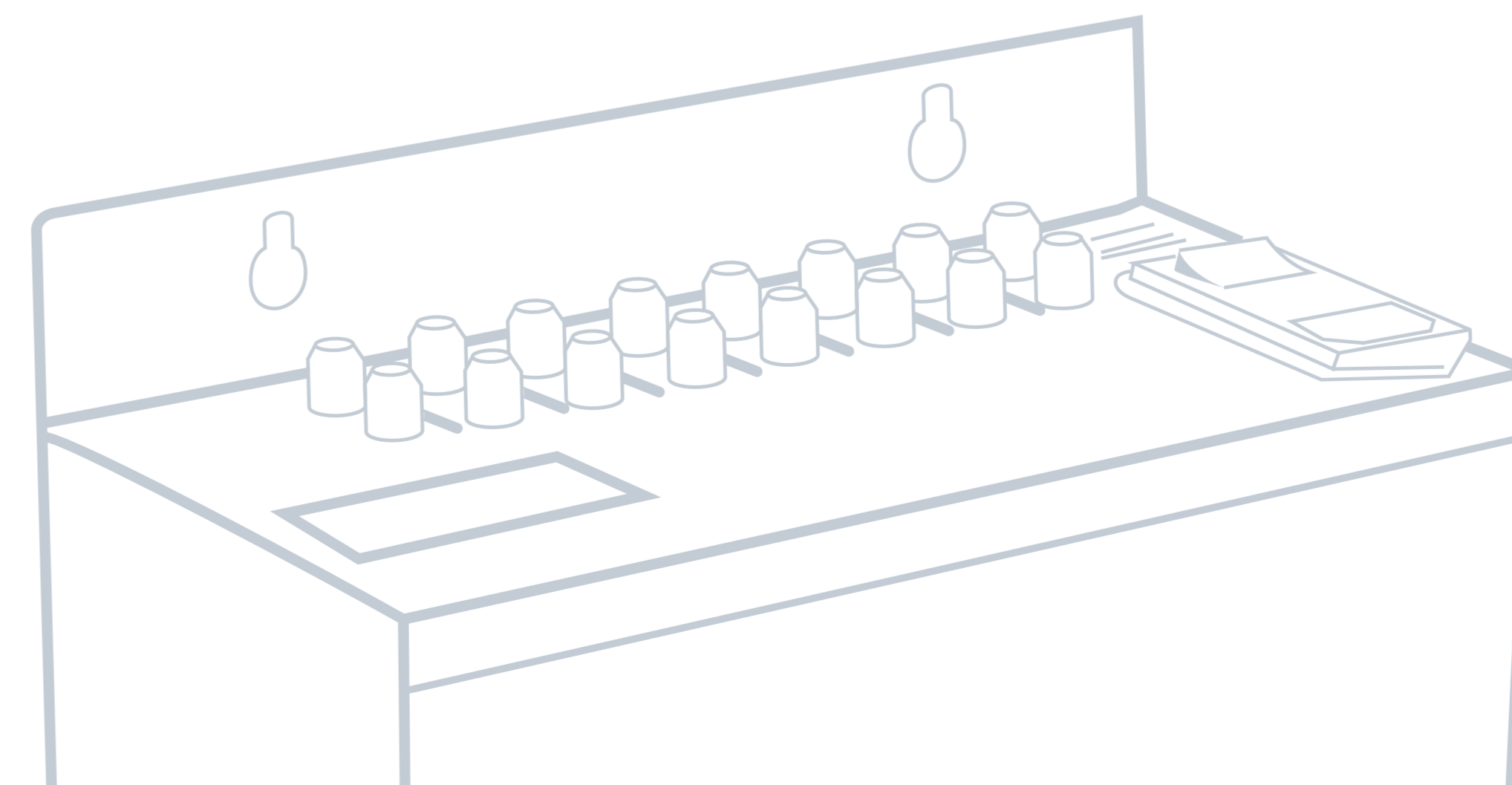
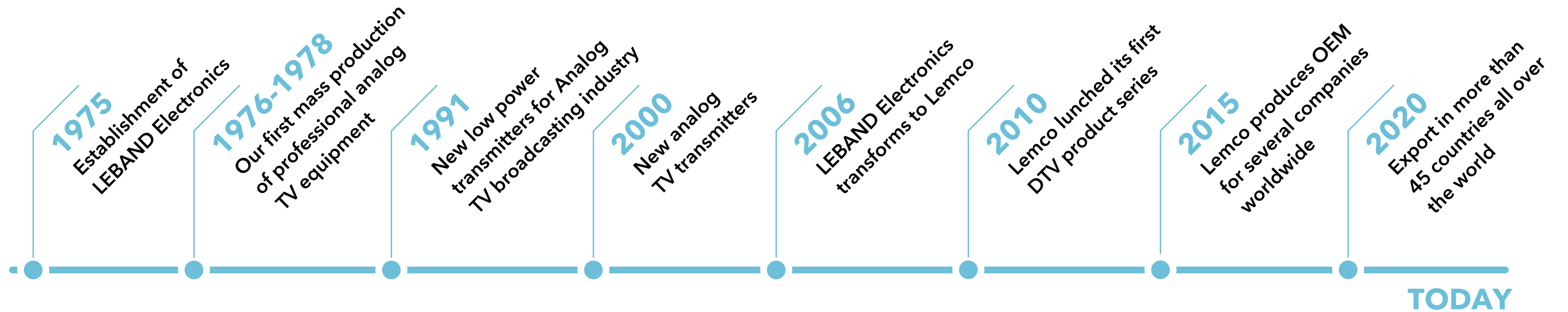
100% EU  
Manufactured



[www.lemco.gr](http://www.lemco.gr)



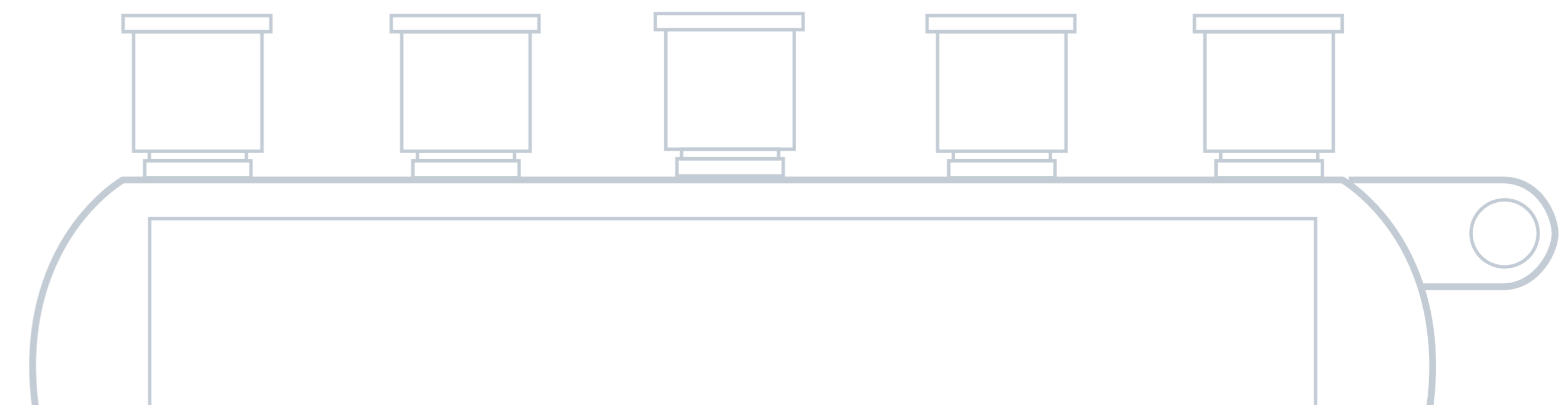
# Timeline



47  
Countries

# Countries we export

- |         |                |                |          |              |             |          |           |
|---------|----------------|----------------|----------|--------------|-------------|----------|-----------|
| GREECE  | FRANCE         | CZECH REPUBLIC | PORTUGAL | ALBANIA      | EGYPT       | FYROM    | ALGERIA   |
| HOLLAND | ITALY          | IRELAND        | CROATIA  | MOROCCO      | SINGAPORE   | INDIA    | VIETNAM   |
| SPAIN   | CYPRUS         | LITHUANIA      | HUNGARY  | SAUDI ARABIA | S. AFRICA   | MALAYSIA | NORWAY    |
| POLAND  | GERMANY        | SLOVAKIA       | TURKEY   | ICELAND      | LEBANON     | TUNISIA  | CHINA     |
| BELGIUM | DENMARK        | FINLAND        | U.A.E.   | AUSTRALIA    | MALDIVES    | NIGERIA  | HONG KONG |
| MALTA   | UNITED KINGDOM | AUSTRIA        | OMAN     | SWITZERLAND  | NEW ZEALAND | IRAQ     |           |



# Project References



**Ministry of Agriculture NL**  
Netherlands



**Drompark**  
Netherlands, Belgium



**EuroParks**  
Netherlands, Germany,  
Belgium



**IKEA Lyon**  
France



**NATO**  
UK



**AMA Waterways**  
Netherlands



**Ascott Serviced Apartments**  
Singapore



**Codere Betting Shops**  
Spain

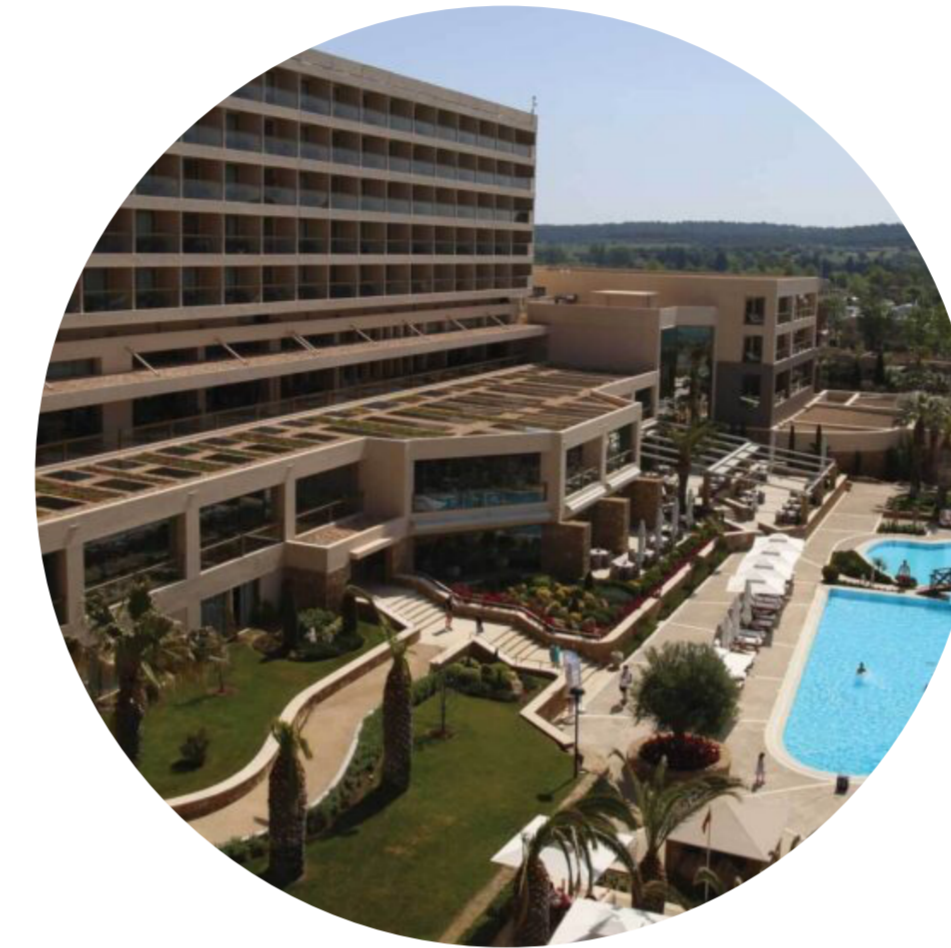
# Project References



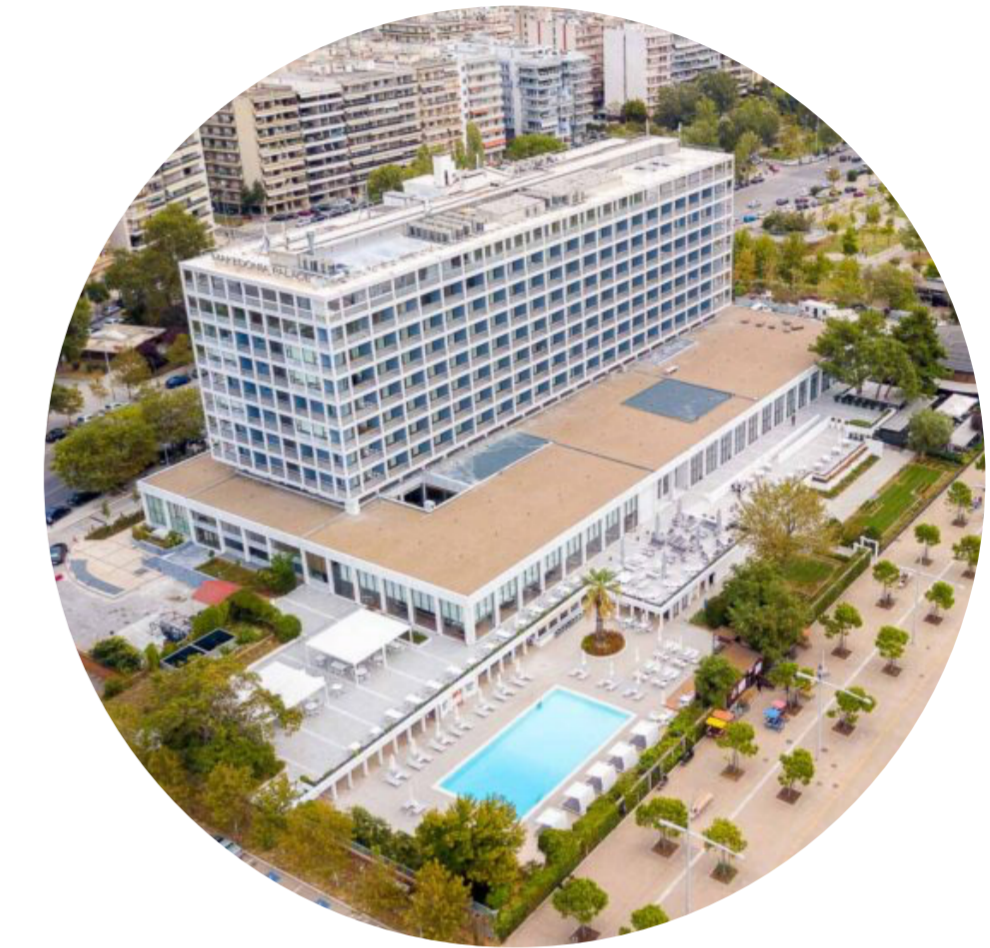
**Grande Bretagne**  
Greece



**PEA**  
Greece



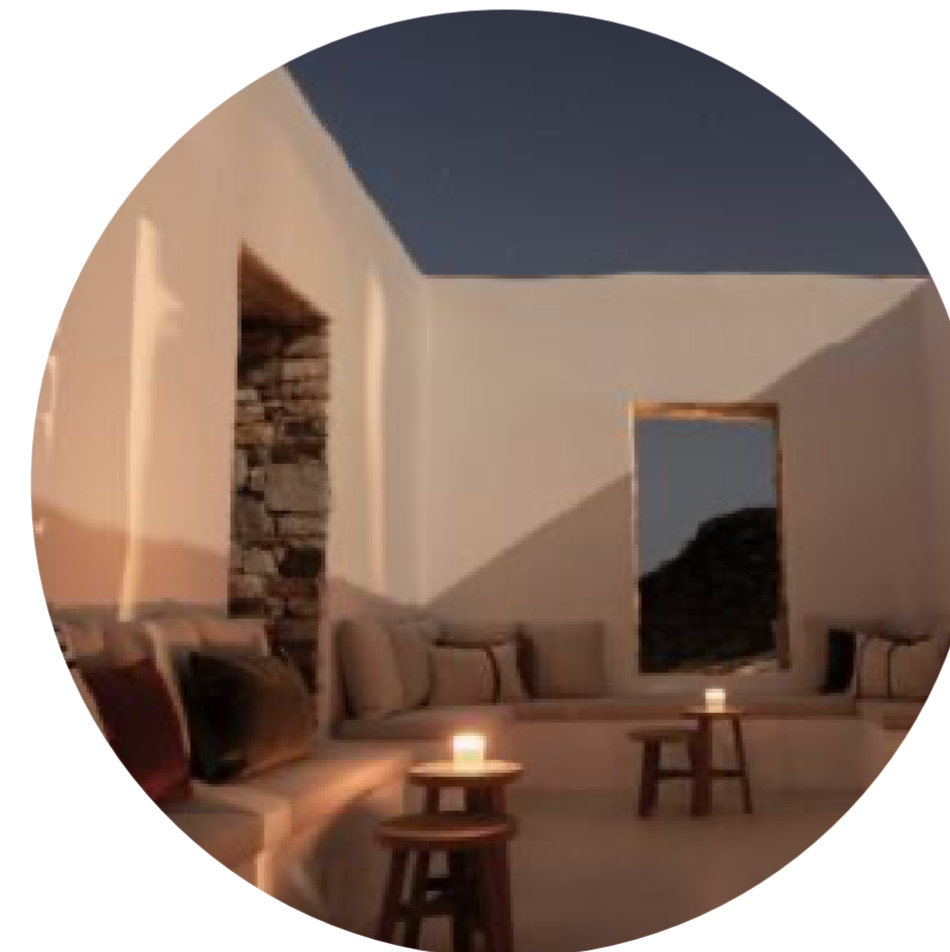
**Sani Resort**  
Greece



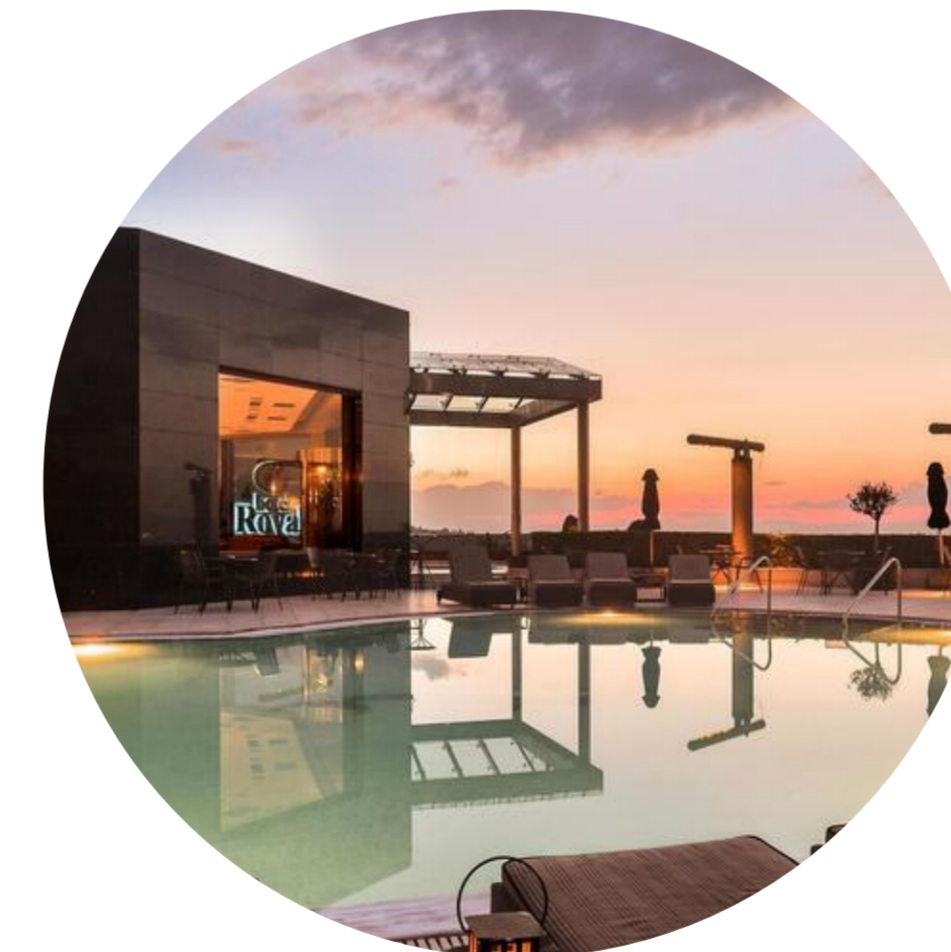
**Macedonia Palace**  
Greece



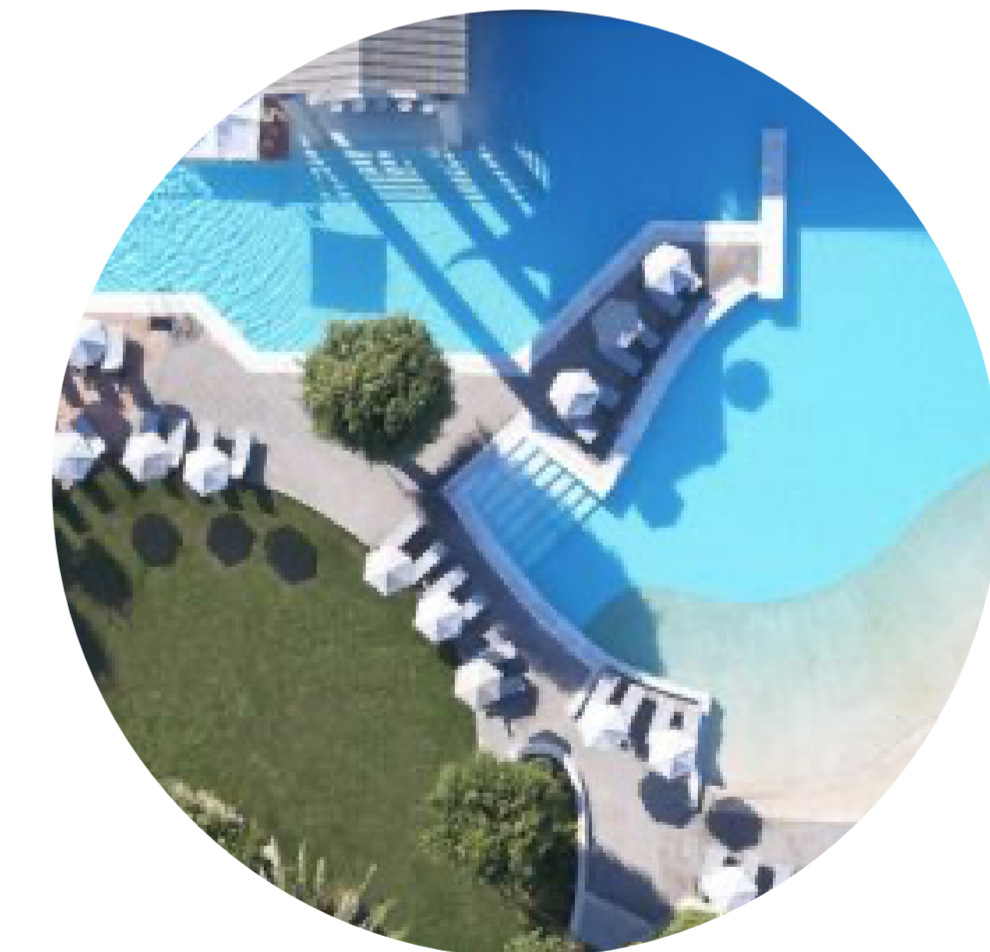
**Mirabello Bay**  
Greece



**The Rooster**  
Greece



**Royal**  
Greece



**Rhodes Bay**  
Greece

# Project References



**Porto Elounda**  
Greece



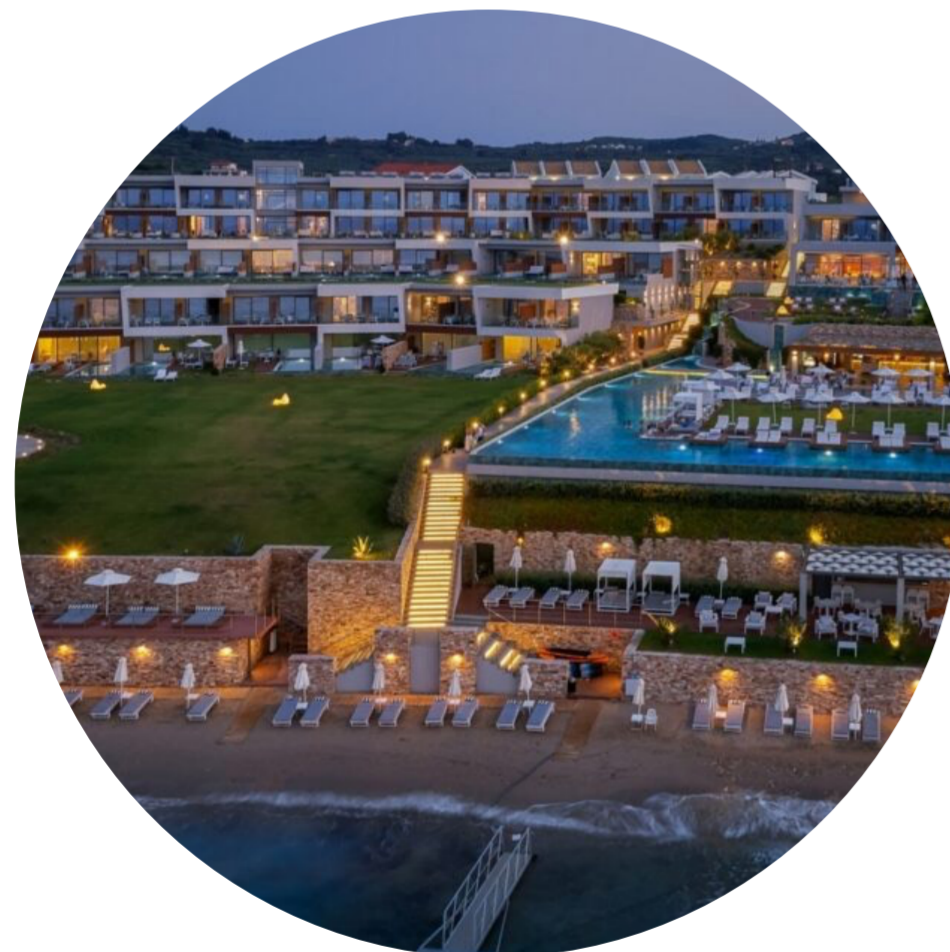
**Onoma**  
Greece



**Noa**  
Greece



**Mandrino**  
Greece



**Mirabello Bay**  
Greece



**Grand Resort Lagonisi**  
Greece



**Elia Ermou Hotel**  
Greece



**Crowne Plaza**  
Greece

# Project References



**Sharjah Airport Hotel**  
UAE



**Emirate Speciality Hospital**  
UAE



**Hili Rayhaan By Rotana**  
UAE



**Marriot Executive Apartments**  
UAE



**Premier Inn ADCC**  
UAE



**Royal Continental Hotel**  
UAE



**Golden Tulip Nizwa**  
Oman



**Class Hotel Apartments**  
UAE

# ISO Certifications



**ISO 9001:2015**

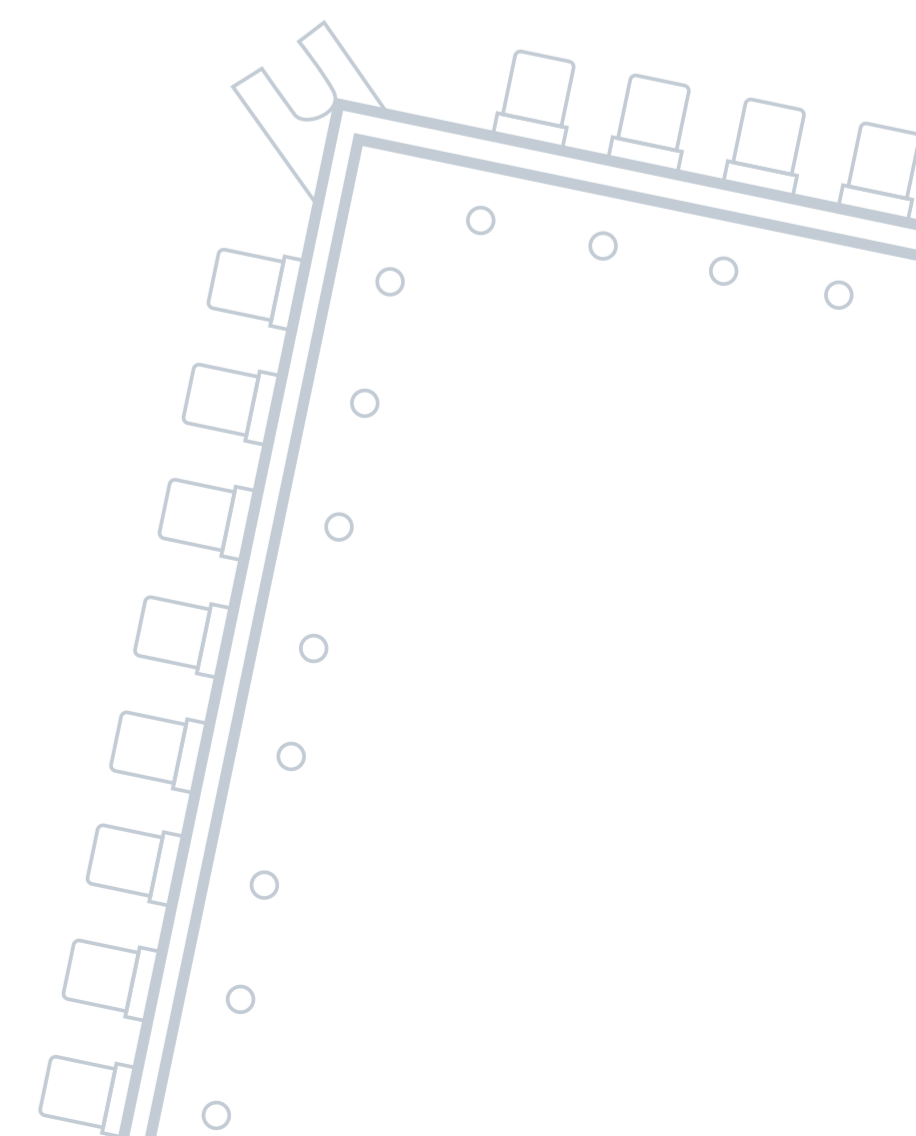


**ISO 14001:2015**



**ISO 45001:2018**

In Lemco we have adopted the standards of the ISO 9001:2015, ISO 14001:2015 and ISO 45001:2018, to our product manufacturing, environmental management and our workplace respectively, in order to provide to our customers unparallel quality and efficiency in every possible level, innovative solutions to the market with ecological sensitivity and responsibility as well as to declare that we consider our employees as the company's greatest asset. Innovation emanates from people and a safe anthropo-centric environment can only promote such new ideas.





# Licenses

Our constant target is to always move forward and provide the highest possible standards of innovative and supreme quality products.



HDCP



BLUETOOTH



HDMI



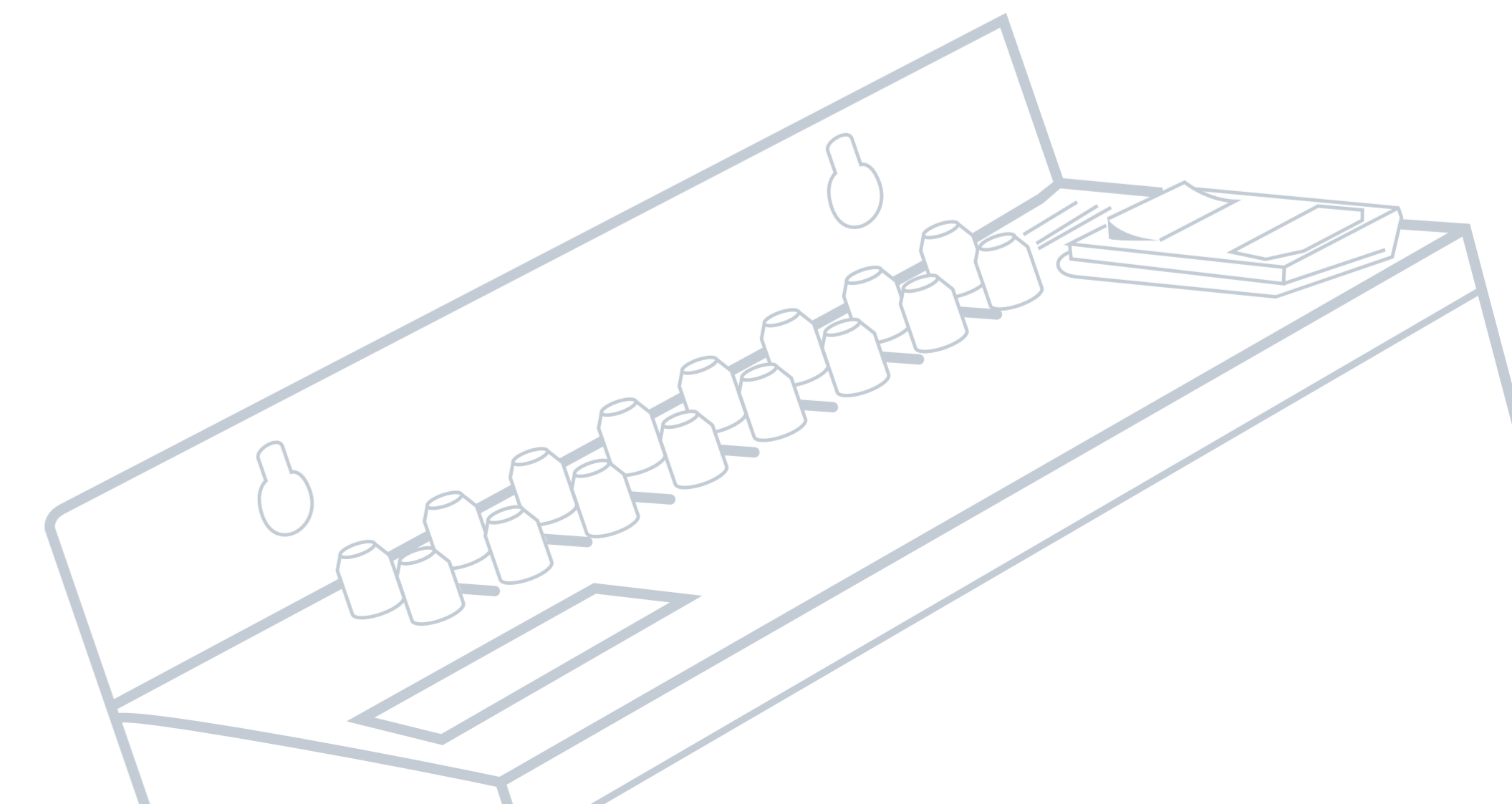
DVB-T2



DVB-S2X

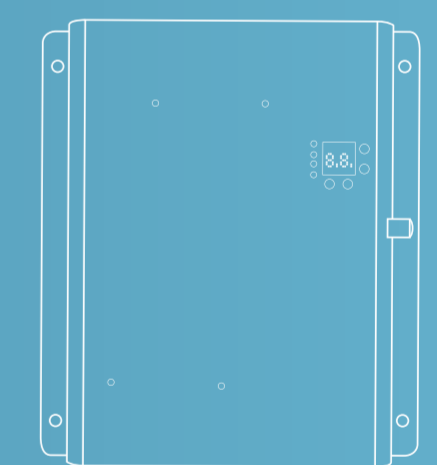
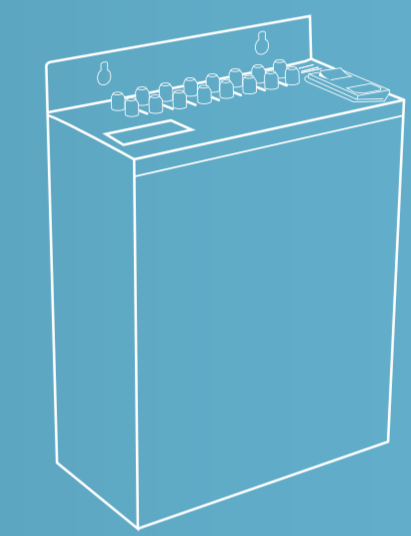
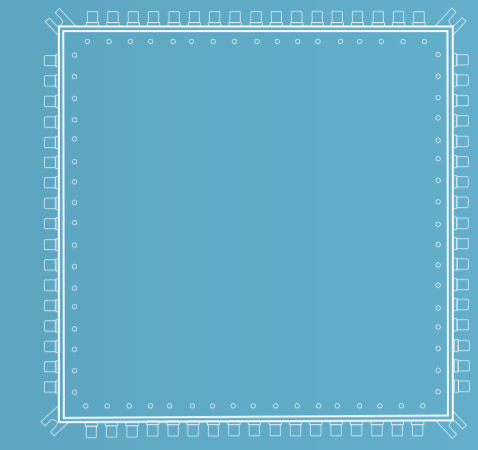


CE



# Our products

Lemco specializes in the development and production of TV signal broadcasting devices as well as CATV applications. More specifically, our product lines span the following categories:



# Microline

Small but powerful mini-headend series consisting of 18 different models able to cover every aspect in small to medium installations by offering the ultimate value for money solution.

- Multi-standard inputs (DVB-S/S2/S2X/T/T2/C/HDMI/IP)
- DVB-T/C outputs software selectable
- Four sub-families
- FTA to RF + IP
- CI to RF + IP
- HDMI to RF + IP
- IP to RF (New)
- «Pool» technology
- FlexCAM technology support
- PID filtering
- Custom NIT, SDT
- HDCP support
- EPG over RF and IP
- Dual external power supplies
- Power supplies redundancy mode
- Small size
- 5year warranty



# Compact Line 2

Fully upgraded and renovated the new Compact Line 2 series will provide even more new features in the same compact form, providing the ultimate solution in hybrid installations where RF and IPTV distribution at the same time is mandatory.

- Multi-standard inputs (DVB-S/S2/S2X/T/T2/C/HDMI/IP)
- DVB-T/C outputs software selectable
- 5x new models
- RF and IP distribution simultaneously
- Linux OS for control
- New and very friendly WEB interface
- “Flex Embedded” inside
- «Pool» technology
- FlexCAM technology support
- PID filtering
- Custom NIT, SDT
- HDCP support
- EPG over RF and IP
- Rack & Wall mount
- 5 year warranty



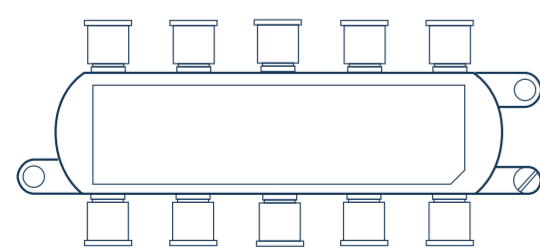
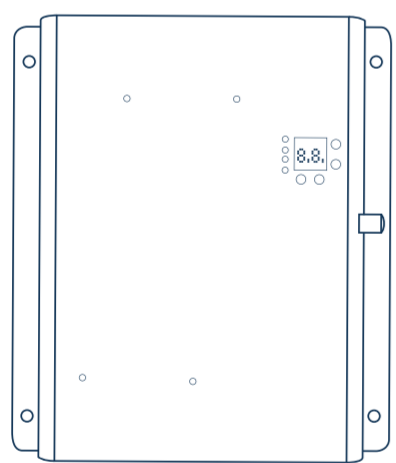
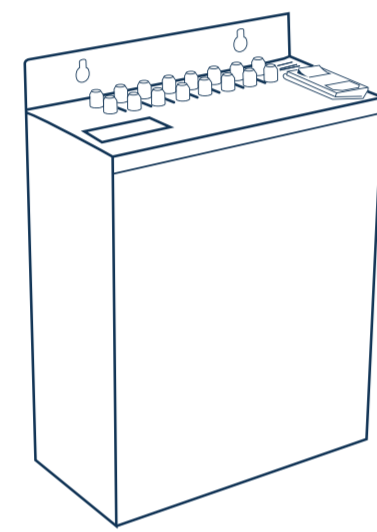
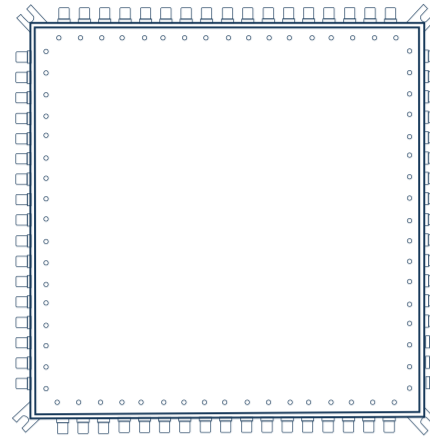
# Pro Line

Flexible and completely dominant the new Pro Line headend series will satisfy any need in even the most demanding applications by utilizing its new 16-input to 16-output hardware platform in 1U rack size offering more than 10 available different models and raising the competition to the limit.

- Up to 16x multi-standard inputs (DVB-S/S2/S2X/T/T2/C/HDMI/IP, ASI)
- Up to 16x DVB-T/C outputs software selectable
- Up to 8x CAM support
- More than 10 different models
- RF and IP distribution simultaneously
- Linux OS for control
- Very friendly interface
- "Flex Embedded" inside
- «Pool» technology
- FlexCAM technology support
- PID filtering
- Custom NIT, SDT
- HDCP support
- EPG over RF and IP
- Dual "hot" pluggable power supplies
- Power supply redundancy mode
- 1U rack size
- 5year warranty



# Headend series comparison



	Micro Line	Compact Line	Compact Line 2	Pro Line
4xIN to 4xOUT	✓			
8xIN to 4xOUT		✓	✓	
16xIN to 16xOUT				✓
Flex CAM	✓		✓	
DVB-S2X support	✓		✓	✓
Multistream support	✓		✓	✓
PID filtering	✓	✓	✓	✓
Custom NIT/SDT	✓	✓	✓	✓
RF and IP simultaneously		✓	✓	✓
EPG over RF and IP	✓	✓	✓	✓
Linux OS			✓	✓
Fleex Embedded			✓	✓
Rack mount		✓	✓	✓
Wall mount	✓	✓	✓	
Dual redundant power supplies	✓			✓
5 year warranty	✓	✓	✓	✓

# Modulators

Lemco's "Home" DVB-T modulators offer a high-quality solution for installations that need to convert an HDMI input to an RF DVB-T channel. With an excellent image quality (Full HD 1920 \* 1080 - 30p) and a MER of ~35dB, they are the ideal solution for the distribution of digital SD/HD signals coming from e.g. DVD players, STBs or cameras to a TV set using DVB-T technology.

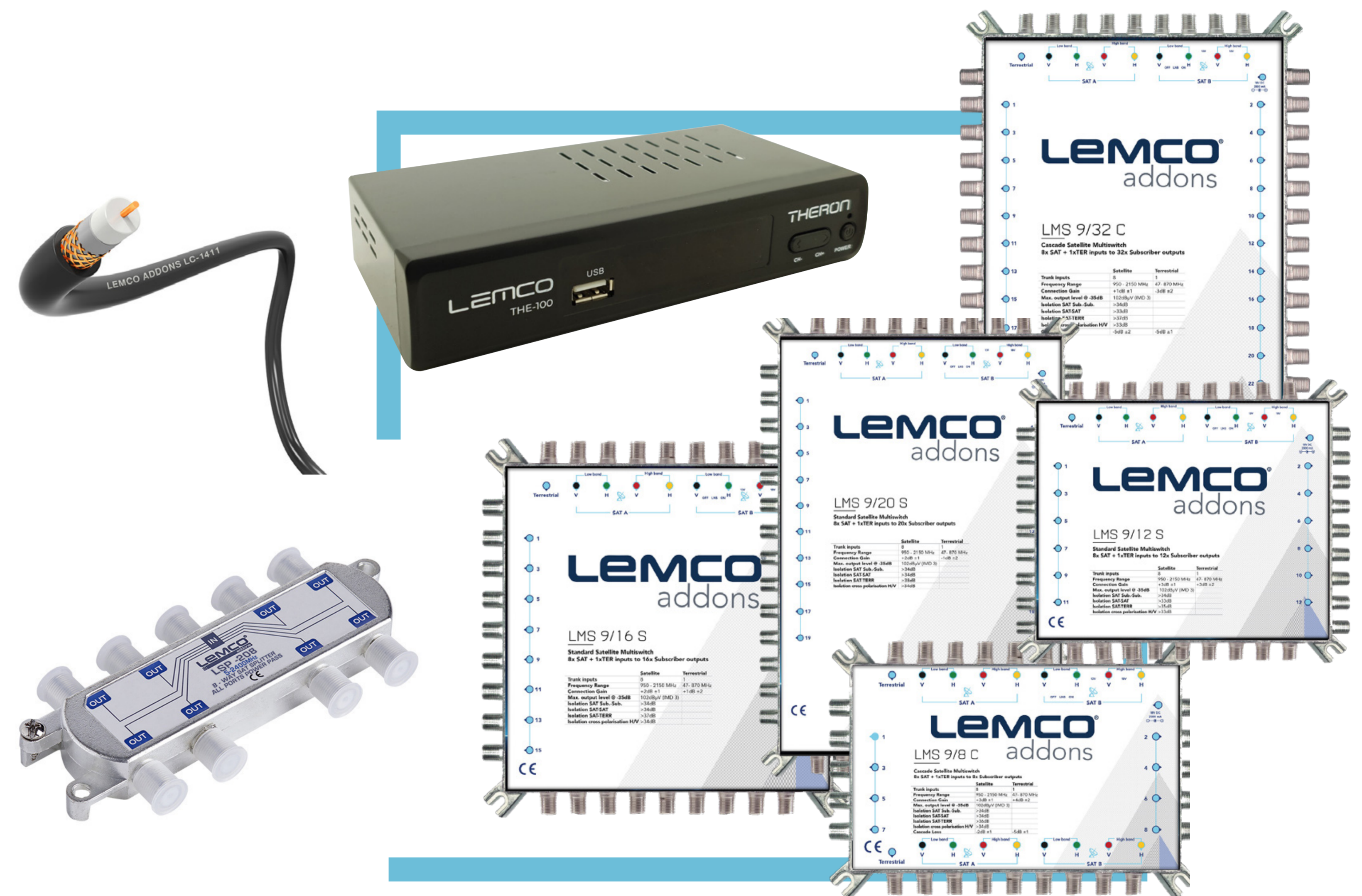
- HDMOD 4
- HDMOD 5 series
- HDMOD 6 series
- HDMOD Q1



# Lemco addons

We are dedicated to meeting the needs of our customers and to keeping our promises. Our primary objective is the provision of products of high quality and standards and for that reason we offer a variety of products for your installations.

- Multiswitches
- RF connectors
- RF splitters
- Coaxial cables
- HDMI cables
- STBs
- Attenuators
- 4G/5G Filters
- Amplifiers
- Tools





LEMCO

5 *years*  
**warranty**

[www.lemco.gr](http://www.lemco.gr)

# Lemco expanded



Estimated from 1975, Lemco main core business of designing, developing and producing appliances in-house for TV signal distribution over RF and IP.



Taking advantage of Lemco's experience in hardware, firmware and software development Lemco Development sub-branch is able to design your complete custom need for any project.



Using our more than 45 years of experience in digital technologies Lemco Integrator sub-branch offers high quality services of installation in any upcoming project.



Our passion for video games and more led to the opportunity to create a sub-branch to enter in video games development industry.



TV



Radio



Info Channel



Weather



**TV just got better...**

bringing the future of information & media

An new product by Lemco

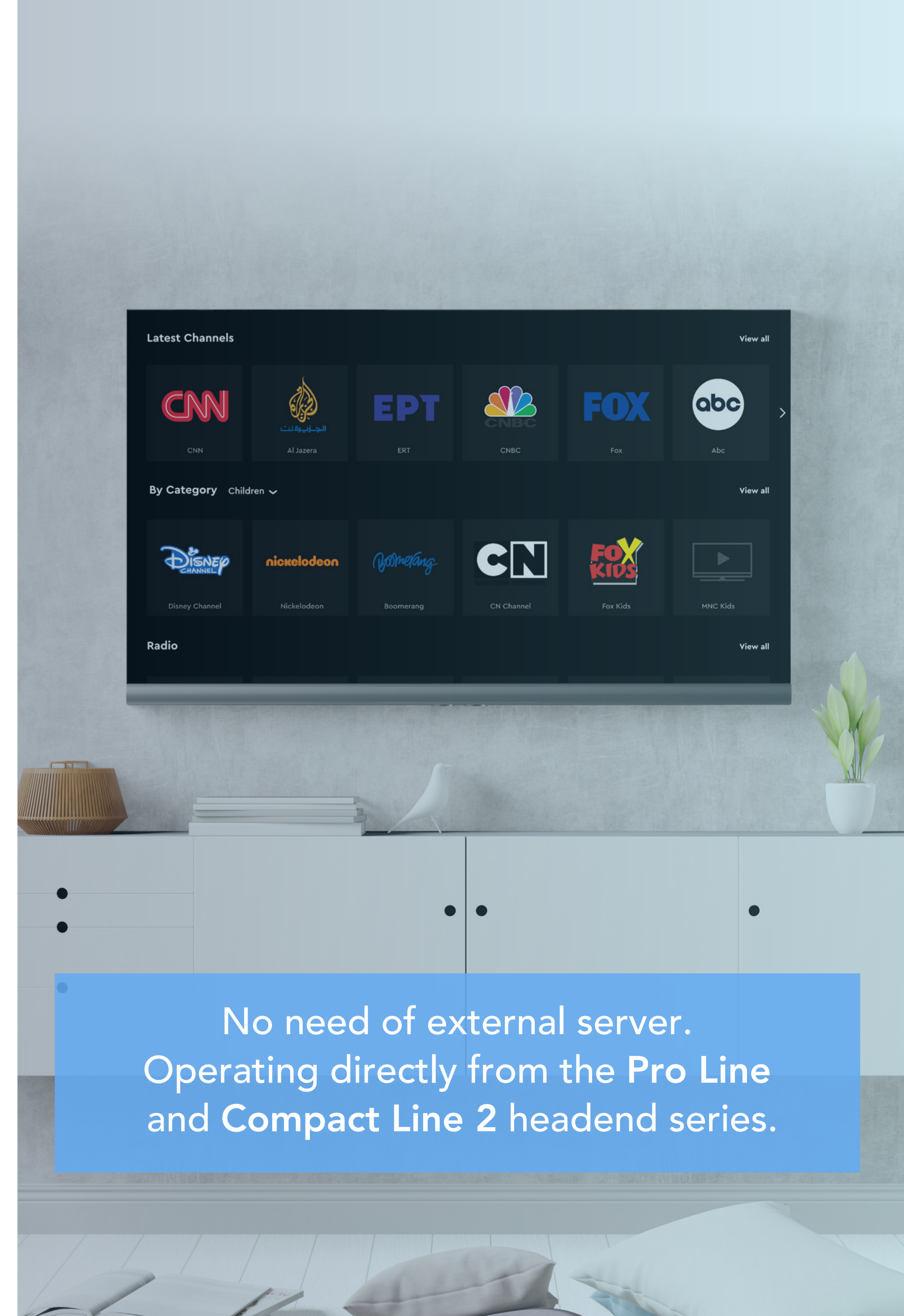
LEMCO



The most affordable and amazing IPTV middleware solution able to operate in all Lemco headends from Pro and Compact Line series just became a reality by offering superb experience, a majority of options, ease of use and complete control of all TV monitors in small to medium installations.

- Live TV
- Live Radio
- Up to 10 Info pages
- Weather info
- Time/Date info
- 'Alarm' functionality
- Support up to 500 TVs
- Support of LG, Samsung, Philips Hotel Smart TVs
- External STB supported
- Unlimited languages
- Very easy interface
- One-time fee license

[www.lemco.gr](http://www.lemco.gr)



No need of external server.  
Operating directly from the Pro Line  
and Compact Line 2 headend series.

LEMCO



Meet the ultimate experience with the upcoming “Fleex Prime” by connecting and interacting with your customers and make their experience unique by enhancing their accommodation with a complete suite of new technological services.

- Live TV
- Live Radio
- Video-On-Demand (VOD)
- Pay TV
- HLS streaming on mobile devices over WIFI
- Welcome” functionality
- Automatic Check IN/OUT
- PMS connectivity
- Billing
- Point of Interests (POI)
- Advertisements
- Ordering system
- Flight/Train schedule
- Weather info
- Time/Date info
- ‘Alarm’ functionality
- Unlimited support of TVs
- Support of LG, Samsung, Philips Hotel Smart TVs
- External STB supported
- Chromecast support
- Unlimited languages
- Very easy interface
- Parental control
- Applications
- Internet browser
- And more...

[www.lemco.gr](http://www.lemco.gr)

Operating on an external server made by Lemco.



LEMCO

# Lemco by numbers

*5* years  
**warranty**

**47**  
countries  
all over the world

**100%**  
EU manufactured

*15.000*  
Headends & counting...

LEMCO



[www.lemco.gr](http://www.lemco.gr)

#### Lemco Europe

Lemco I.K.E.

Latheas 46, 13678, Acharnes,

Athens, Greece

**TEL:** +30 210 2811401, +30 210 2405237

**E-MAIL:** [info@lemco.gr](mailto:info@lemco.gr)

#### Lemco MEA

Lemco Middleeast LLC

S22 Al Owais Avenue, 25th Street,

DUBAI, United Arab Emirates

**TEL:** +971 4 8830866

**E-MAIL:** [middleeast@lemco.gr](mailto:middleeast@lemco.gr)

LEMCO

thank you